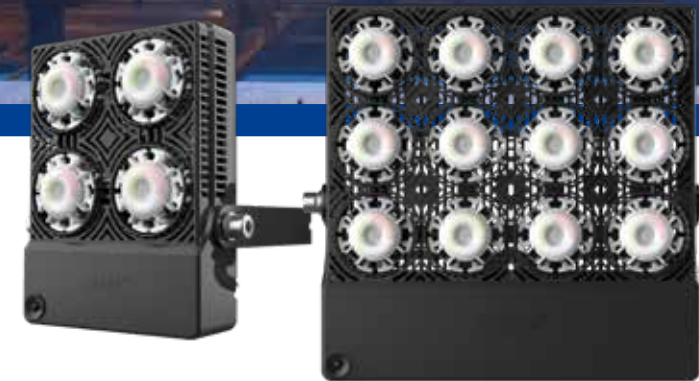
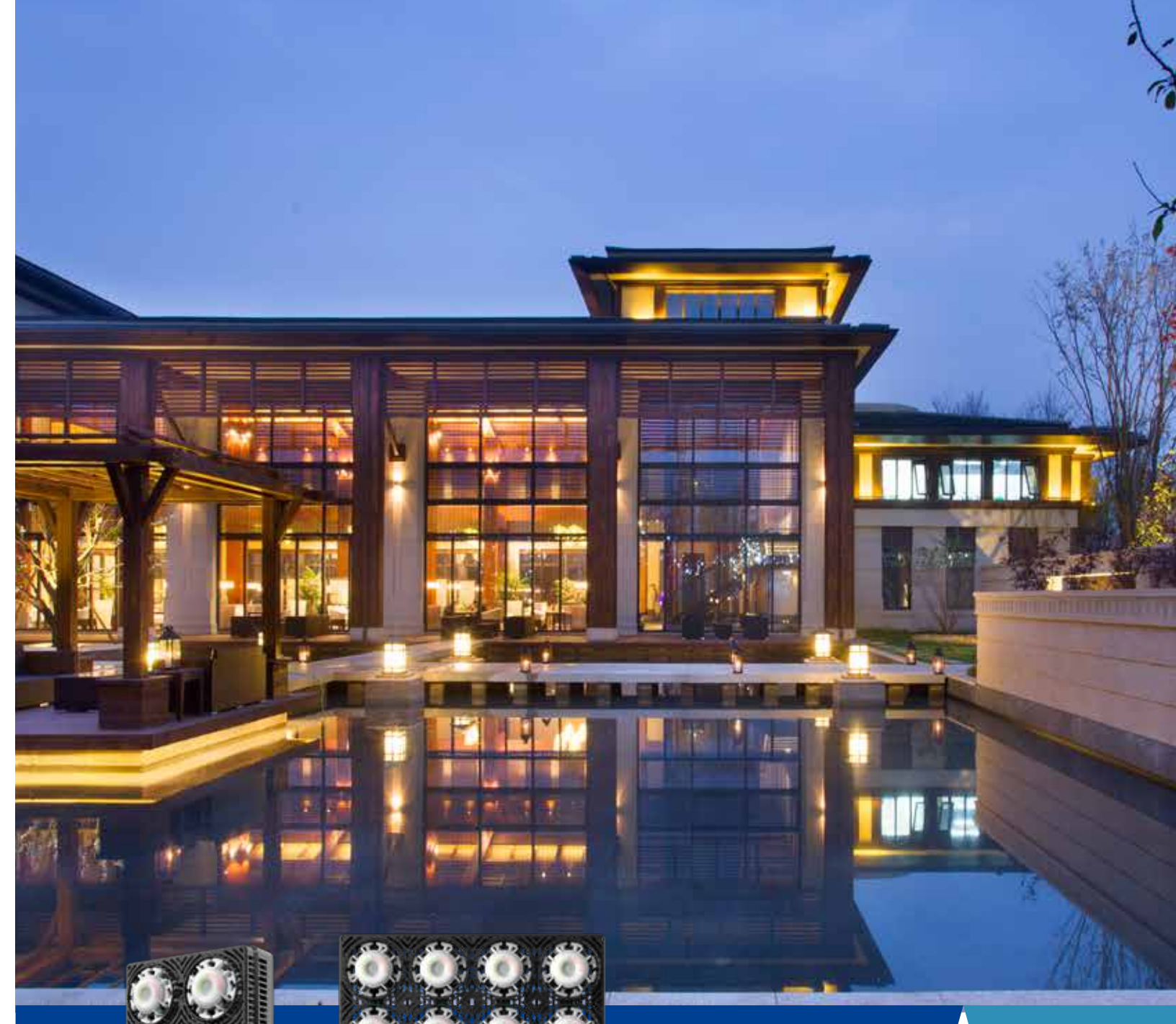
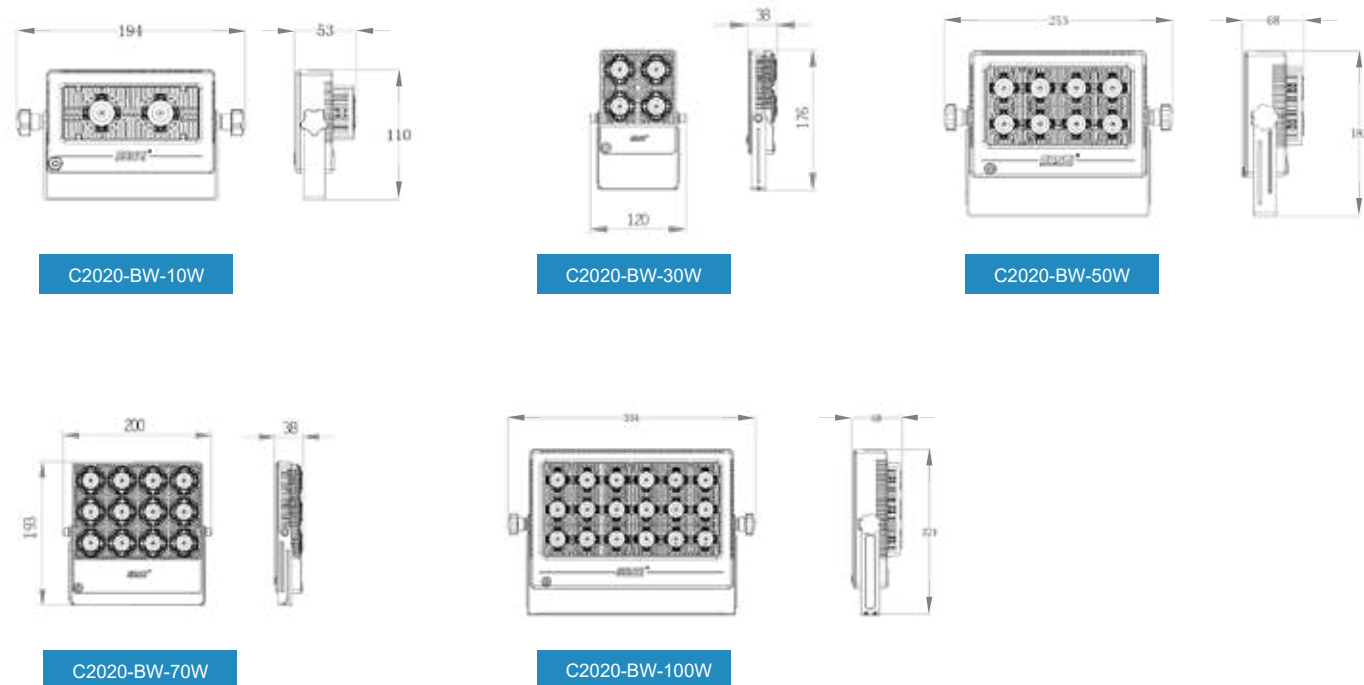


## Technical Parameters

Model	Wattage	Input Voltage	Dimming	Beam Angle	CCT	Luminous Flux	CRI	IP Degree	Lifespan	Dimensions
C2020-BW	10W	AC 100-240V 50/60Hz	No	120°	5700K	1100lm	70	IP66	30,000 hrs	194x110x53mm
C2020-BW	30W		No	120°	5700K	3000lm	70	IP66	30,000 hrs	176x120x38mm
C2020-BW	50W		No	120°	5700K	5000lm	70	IP66	30,000 hrs	253x182x68mm
C2020-BW	70W		No	120°	5700K	7000lm	70	IP66	30,000 hrs	200x193x38mm
C2020-BW	100W		No	120°	5700K	10000lm	70	IP66	30,000 hrs	334x221x68mm

Model	Wattage	Input Voltage	Dimming	Beam Angle	Light Color	IP Degree	Lifespan	Dimensions
C2020-BW	10W	AC 100-240V 50/60Hz	Remote Control	120°	RGB	IP66	30,000 hrs	194x110x53mm
C2020-BW	30W		Remote Control	120°	RGB	IP66	30,000 hrs	176x120x38mm
C2020-BW	50W		Remote Control	120°	RGB	IP66	30,000 hrs	253x182x68mm
C2020-BW	70W		Remote Control	120°	RGB	IP66	30,000 hrs	200x193x38mm
C2020-BW	100W		Remote Control	120°	RGB	IP66	30,000 hrs	334x221x68mm

## Dimensions (mm)



**SANSI**

## RGB Remote Control Floodlight

C2020-BW Series

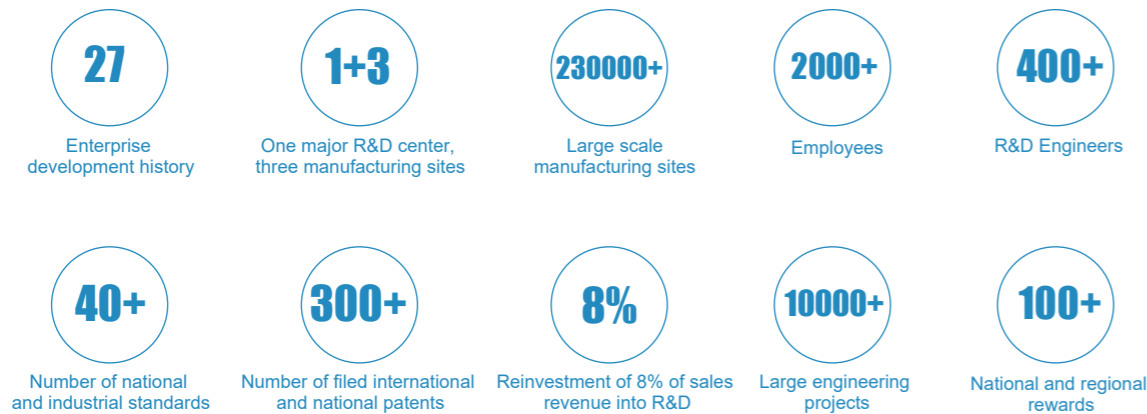


# A Global Leader in LED Lighting and Displays



Since its founding in 1993, SANSI has been dedicated to technological innovation in a wide range of LED applications, from commercial displays to residential lighting. With over 400 in-house engineers, 2,000 employees and 3 advanced factories, SANSI has reached over 40 countries on 5 continents.

SANSI utilizes 230,000 square meters of space for manufacturing, sales and customer service to support their commercial and residential projects. Having successfully launched over 10,000 cutting-edge projects including New York Times Square, Hong Kong Zhuhai-Macau Bridge, the Chinese Space Program, Xichang Satellite Launch Center, Shanghai World Expo and the Hangzhou G20 Summit. SANSI upholds its core values of innovation, sustainability and commitment. These have allowed SANSI to maintain the path as an industry leader.



## RGB Remote Control Floodlight

Ceramic heat dissipation | RGB | Remote control | Efficient and convenient  
C2020-BW Series

The floodlight(C2020-BW series) has a hollow structure and an air convection design. It is superior and more reliable in performance. The 120° wide-angle optical lens provides a great illuminating effect, which makes the overall lighting environment more harmonious, beautiful and comfortable. It is widely used in commercial exteriors such as hotels, landmarks, exterior walls and bars etc.

## SANSI Patented Ceramic LED Technology

Ceramic dissipates heat more efficiently than aluminum, SANSI LED chips are mounted onto the ceramic directly, free PCB, ensuring faster heat dissipation.

SANSI and other manufacturer (Patent No.: CN ZL 2012 2 0091432.4)



SANSI's Independent Pixel Heat Sink Technology provides both even and fast heat dissipation for each LED light pixel. SANSI's LED chips are mounted onto the ceramic directly, the LED chip(s) for SANSI's LED lights are both PCB adhesive free. Compared with traditional heat dissipation systems, SANSI's ceramic heat dissipation system prolongs the life of the LED light.

## RGB Floodlight with Remote Control

16 colors satisfy all your needs for decorative parties, stages, shows, landscapes, landmarks, bars and so on.

### IP66

SANSI's ceramic pixels and stainless steel bracket prevent corrosion, crack and rust. There is no circuit exposed outside and it is much safer to use on rainy and snowy days.

## 120° Beam Angle, Lights Up Larger Area, Has Uniform Illumination

With superior optical design, SANSI's customized lenses ensure better lighting effects.

## Energy Saving, Reliable and Safe

High lumens with low wattage, it is easy to install.

**Applications:** Yards, hotel exterior, commercial space lighting, etc.

**Certification:** ETL, CE